

Environmental Impact Assessment Of *The Balam Jungle Estate Development*

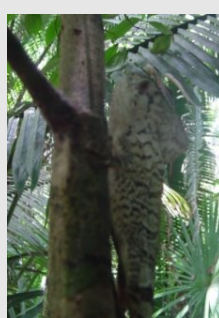
Corozal District, Belize Central America

To Be Undertaken By:

Balam Investments LLC

Dr. h. c. Hartmut Porsch, Managing Member

September 2007



Prepared By:

***Ecoworks – Belize C.A.
Environmental Consultants***

THE ENVIRONMENTAL IMPACT ASSESSMENT TEAM¹

THOM GRIMSHAW

PROJECT COORDINATOR & EDITOR,
ECOWORKS ENVIRONMENTAL CONSULTING SERVICES

VIRGINIA BURNS

CO-EDITOR, FIELD CO-ORDINATOR,
ECOWORKS ENVIRONMENTAL CONSULTING SERVICES

DR. COLIN YOUNG

ECOSYSTEMS SPECIALIST,
GALEN UNIVERSITY

DAVID TZUL

ORNITHOLOGIST,
BIRDS WITHOUT BORDERS, BELIZE

DR. JAIMIE AWE & RAFAEL GUERRA, Asc.

ARCHAEOLOGISTS
INSTITUTE OF ARCHAEOLOGY

CADET HENERSON JR.

ENGINEERING & DESIGN SPECIALIST
ECOWORKS ENVIRONMENTAL CONSULTING SERVICES

¹Team References Are Shown In **Addendum 1**.

SECTION	PAGE
CONTENT LISTS	
COVER PAGE	I
EIA TEAM	II
CONTENTS	III
LIST OF TABLES	VII
LIST OF ILLUSTRATIONS	IX
LIST OF TEXT BOXES	XI
LIST OF ABBREVIATIONS	XII
EXECUTIVE SUMMARY	1
DEVELOPMENT PROFILE	1
ECOSYSTEM AND WILDLIFE CONSERVATION PLAN	8
LEGAL, POLICY AND ADMINISTRATIVE FRAMEWORK	10
International Conventions and Treaties	13
Laws of Belize	13
National Development Guidelines	16
IMPACTS AND MITIGATION	17
THE PROJECT DESCRIPTION	18
PROJECT LOCATION AND OWNERSHIP	19
DEVELOPMENT CONCEPT	19
DEVELOPMENT CHARACTERISTICS	19
The Timber Management Component	19
The Residential Tourism Component	27
Management Structure For The Overall Development	37
THE PHYSICAL ENVIRONMENT	38
METEOROLOGICAL & HYDROLOGICAL CHARACTERISTICS	39
Meteorology Characteristics	39
Bathymetry, Topography & Site Hydrology	39
GEOLOGY	48
Geologic Setting	48
Stratigraphy	48
Tectonics	60
Implications Of Site Geology On The Development	61

Continued...

SECTION	PAGE
THE PHYSICAL ENVIRONMENT, <i>Continued</i>	
WATER QUALITY CHARACTERISTICS	62
Chemical Water Quality	62
Biological Water Quality	62
Conclusions & Recommendations	62
TERRESTRIAL FLORA & FAUNA	62
Ecosystems Descriptions & Plant Species Lists	66
Survey Results	84
Taxonomic Diversity Of The Balam Jungle Estate	85
Forest Threats	85
Recommendations	87
Vertebrate Fauna	89
MARINE FLORA & FAUNA	97
Flora	97
Vertebrate Fauna	99
Recommendations	99
HISTORICAL AND CONTEMPORARY LAND USE	100
IMPACT ASSESSMENT	
TRANSPORTATION IMPACTS <i>Specific To Road Design</i>	104
LAND-BASED TRANSPORTATION PLAN AND DESIGN OPTIONS	104
LAND-BASED TRAFFIC TRANSPORTATION IMPACTS AND MITIGATION MEASURES	106
MONITORING REQUIREMENTS	106
TRANSPORTATION IMPACTS <i>Specific To Sea Transport & Marina Design</i>	109
SEA-BASED TRANSPORTATION PLAN AND DESIGN OPTIONS	109
SEA-BASED TRANSPORTATION IMPACTS AND MITIGATION MEASURES	113
MONITORING REQUIREMENTS	115
MATERIAL RESOURCE USE	117
MATERIAL VOLUME REQUIREMENTS AND SUPPLY OPTIONS	117
EXTRACTION IMPACTS AND MITIGATION MEASURES	120
MONITORING REQUIREMENTS	122

Continued...

SECTION	PAGE
IMPACT ASSESSMENT , <i>Continued</i>	
WATER RESOURCE USE & SUPPLY	124
FRESHWATER REQUIREMENTS AND SUPPLY OPTIONS	124
FRESHWATER ABSTRACTION IMPACTS AND MITIGATION MEASURES	129
MONITORING REQUIREMENTS	132
LIQUID WASTE PRODUCTION AND MANAGEMENT	134
EFFLUENT CLASSIFICATION AND VOLUME ESTIMATE	134
TREATMENT OPTIONS AND SITE REMEDIATION CAPACITY	134
DOMESTIC EFFLUENT IMPACTS AND MITIGATION MEASURES	136
MONITORING REQUIREMENTS	139
SOLID WASTE MANAGEMENT	141
COMPOSITION, VOLUME & TREATMENT OPTIONS	141
SOLID WASTE TREATMENT IMPACTS AND MITIGATION	143
MONITORING REQUIREMENTS	143
ENERGY USE & SUPPLY	146
ENERGY REQUIREMENTS AND SUPPLY OPTIONS	146
ENERGY USE IMPACTS AND MITIGATION	149
MONITORING REQUIREMENTS	151
WILDLIFE	153
SITE HABITATS AND WILDLIFE SPECIES	153
WILDLIFE IMPACTS AND MITIGATION	153
MONITORING REQUIREMENTS	165
CULTURE, CUSTOMS AND SOCIAL FACTORS	169
CULTURAL IMPACT RISKS	169
CUSTOMS AND CULTURAL IMPACT RISKS	169
IMPACTS & MITIGATION MEASURES	170
MONITORING REQUIREMENTS	172

SECTION	PAGE
DISASTER MANAGEMENT PLAN <i>Specific To Operational Safety & Security</i>	174
FIRE PREPAREDNESS PLAN	174
CIVIL SECURITY PREPAREDNESS PLAN	176
DISASTER MANAGEMENT PLAN <i>Specific To Hurricanes & Other Natural Disasters</i>	177
HURRICANE PREPAREDNESS PLAN	177
ALTERNATIVES FOR DEVELOPMENT	185
IMPACTS & MITIGATION MEASURES	190
MITIGATION MEASURES FOR THE PROPOSED DEVELOPMENT	190
CUMULATIVE IMPACTS AND MITIGATION MEASURES	201
MONITORING PROGRAM	206
REPORT ADDENDA	NUMBER
PREPARER'S RESUMES	1
INCORPORATION CERTIFICATE	2
TERMS OF REFERENCE	3
LAWS OF BELIZE	4
MANATEE CONSERVATION GUIDELINES	5
CERTIFICATES OF TITLE	6
BJE TIMBER MANAGEMENT PLAN	7
GOLF COURSE GRASS SPECIES & AGROCHEMICALS	8
PURESTREAM TREATMENT PLANTS	9
KLARGESTER TREATMENT PLANTS	10
US NATIONAL WEATHER SERVICE HURRICANE FORECAST	11
GEOTECHNICAL REPORT ON MARINE SEDIMENTS	12
GEOTECHNICAL REPORT ON COASTAL SOILS	13
WATER LABORATORY ANALYSES	14
BOTANICAL SPECIES LISTS	15
ARCHAEOLOGICAL IMPACT ASSESSMENT	16
LITERATURE CITED	17

... End

LIST OF TABLES PRESENTED

NUMBER	TITLE	PAGE
	CONTENTS	III
	LIST OF TABLES PRESENTED	VII
	LIST OF ILLUSTRATIONS PRESENTED	IX
	LIST OF TEXT BOXES	XI
	LIST OF ABBREVIATIONS	XII
1	PRIMARY CHARACTERISTICS OF THE PROPOSED DEVELOPMENT	7
2	KEY WILDLIFE SPECIES OF CONSERVATION INTEREST	12
3	LEGISLATION RELEVANT TO THE PROPOSED DEVELOPMENT	14
4	KEY DEVELOPMENT IMPACTS AND MITIGATION MEASURES	17
5	2007 HARDWOOD TIMBER INVENTORY OF TREES HAVING > 45 CM DBH	26
6	PROPOSED LAND USE ALLOCATION FOR THE STAGE 1 DEVELOPMENT	31
7	OCCUPANCY ALLOCATION FOR THE STAGE 1 DEVELOPMENT	33
8	MARINE SEDIMENT SURFACE ELEVATION BELOW SEA LEVEL AT THE BJE	43
9	MARINE SEDIMENT THICKNESS & BEDROCK DEPTH BELOW SEA LEVEL	53
10	SOIL CHARACTERISTICS OF THE COASTAL SAVANNA	56
11	WATER QUALITY PARAMETERS FOR BENNETS LAGOON AND CHETUMAL BAY	64
12	<i>TROPICAL EVERGREEN SEASONAL BROADLEAF LOWLAND FOREST - TRANSECT 1</i>	71
13	<i>TROPICAL EVERGREEN SEASONAL BROADLEAF LOWLAND FOREST - HIGH VARIANT</i>	72
14	<i>TROPICAL EVERGREEN SEASONAL BROADLEAF LOWLAND FOREST - TRANSECT 2</i>	73
15	<i>LOWLAND BROADLEAF FOREST: WITH A PREDOMINANCE OF COHUNE PALM - SE BJE</i>	75
16	<i>LOWLAND BROADLEAF FOREST: WITH A PREDOMINANCE OF COHUNE PALM - NW BJE</i>	76
17	<i>HIGH TROPICAL EVERGREEN SEASONAL SWAMP FOREST OF NORTHERN BELIZE</i>	78
18	<i>LOW TROPICAL EVERGREEN SEASONAL SWAMP FOREST OF NORTHERN BELIZE</i>	79
19	SAVANNA ORCHARD - SPECIES LIST	81
20	MIXED MANGROVE SCRUB - SPECIES LIST	82
21	ANURAN FAUNA WITH RANGES THAT ENCOMPASS THE BALAM JUNGLE ESTATE	90
22	REPTILIAN FAUNA WITH RANGES THAT ENCOMPASS THE BALAM JUNGLE ESTATE	91
23	WILDTRACKS (2003b) BIRD LIST FOR THE BALAM JUNGLE ESTATE	93
24	MAMMALS OF THE BALAM JUNGLE ESTATE	98
25	MITIGATION MATRIX OF LAND-BASED TRANSPORTATION IMPACTS	107

Continued...

LIST OF ILLUSTRATIONS PRESENTED

NUMBER	TITLE	PAGE
1	LOCATION MAP FOR THE PROPOSED DEVELOPMENT	2
2	2000 LANDSAT-7 SATELLITE IMAGE OF THE BALAM JUNGLE ESTATE	3
3	THE 6 SECTIONS OF DEVELOPMENT PLANNED FOR THE BJE	4
4	MASTER PLAN FOR THE SECTION-1 DEVELOPMENT	5
5	PHASES OF THE SECTION-1 DEVELOPMENT	6
6	LAND COVER UTILIZATION BY THE PROPOSED DEVELOPMENT	9
7	WILDLIFE OF THE PROPOSED DEVELOPMENT SITE	11
8	ORIENTATION OF LAND GRANTS FORMING THE BALAM JUNGLE ESTATE	20
9	200X LANDSAT 7 IMAGE OF THE PROPOSED DEVELOPMENT REGION	21
10	AERIAL PHOTOS OF THE BJE DEVELOPMENT SITE	22
11	EXTENT OF HABITATS WITHIN THE BALAM JUNGLE ESTATE	23
12	LOCATION MAP OF TIMBER LANDS PROPOSED FOR MANAGEMENT	24
13	FOREST SAMPLING STATIONS WITHIN THE BALAM JUNGLE ESTATE	25
14	MASTER PLAN FOR THE STAGE-1 DEVELOPMENT SITE	28
15	ORIENTATION OF THE STAGE-1 DEVELOPMENT SITE	29
16	SIX PHASES OF THE STAGE-1 RESIDENTIAL TOURISM DEVELOPMENT PLAN	30
17	RAINFALL ISOPLETHS FOR BELIZE	40
18	2005 TROPICAL CYCLONE PROBABILITIES FOR THE ATLANTIC	41
19	MAP OF BATHYMETRIC SURVEY POINTS ALONG THE BJE COASTLINE	42
20	3D RELATIVE ELEVATION MODEL OF THE BALAM JUNGLE ESTATE	45
21	HYDROLOGICAL CHARACTERISICS OF THE BALAM JUNGLE ESTATE	46
22	GEOLOGY MAP FOR THE PROJECT SITE	49
23	SEDIMENT & BEDROCK CHARACTERISTICS OF CHETUMAL BAY	48
24	MARINE SEDIMENT CORE & BEDROCK PROBE SAMPLING PONTs	51
25	COLLECTION OF MARINE SEDIMENT & BEDROCK DATA WITHIN THE BJE	52
26	COASTAL CORING & BEDROCK SAMPLING SITES	54
27	COLLECTION OF COASTAL SOIL AND BEDROCK DATA	55
28	FOREST CORING & BEDROCK SAMPLING SITES	58
29	GEOLOGICAL FEATURES OF THE WESTERN BALAM JUNGLE ESTATE	59
30	TYPICAL BJE QUARRY CROSS SECTION	60
31	FAULT LINES OF NORTHERN BELIZE	60
32	CHEMICAL & BIOLOGICAL WATER QUALITY SAMPLING STATIONS	63
33	COMMON PLANKTERS OF BENNETT'S LAGOON, BALAM JUNGLE ESTATE	65

Continued...

LIST OF ILLUSTRATIONS PRESENTED

NUMBER	TITLE	PAGE
34	AERIAL VIEWS OF THE BALAM JUNGLE ESTATE LAND COVER	68
35	LAND COVER CLASSIFICATION FOR THE BALAM JUNGLE ESTATE	69
36	<i>TROPICAL EVERGREEN SEASONAL BROADLEAF LOWLAND FOREST</i>	70
37	<i>TROPICAL EVERGREEN SEASONAL BROADLEAF LOWLAND FOREST / Cohune Ridge</i>	74
38	<i>TROPICAL EVERGREEN SEASONAL SWAMP FOREST OF NORTHERN BELIZE</i>	78
39	TYPICAL RESIDENTS OF THE <i>SAVANNAH ORCHARD FOREST</i>	80
40	TYPICAL SCENES & SPECIES OF COASTAL FORESTS	82
41	NATURAL GROUND CHARACTERISTICS OF THE WESTERN BJE.	84
42	FIRE RISK LEVELS WITHIN THE BALAM JUNGLE ESTATE	88
43	ANURANS OF THE BALAM JUNGLE ESTATE	89
44	REPTILES OF THE BALAM JUNGLE ESTATE	89
45	BIRDS OF THE BALAM JUNGLE ESTATE	96
46	MAMMALS OF THE BALAM JUNGLE ESTATE	97
47	MARINE FLORA OF THE BALAM JUNGLE ESTATE	97
48	MARINE FAUNA OF THE BALAM JUNGLE ESTATE	99
49	FOUND EVIDENCE OF COLONIAL & MAYA OCCUPATION	102
50	CULTURAL SITES WITHIN THE BALAM JUNGLE ESTATE	101
51	EXISTING AND PROPOSED ROAD CARRIAGEWAYS SERVICING THE BJE	105
52	SEA APPROACH TO THE SECTION 1 RESIDENTIAL TOURISM COMPONENT	112
53	CUT AND FILL ZONES WITHIN THE STAGE 1 DEVELOPMENT	119
54	WATER RESOURCE AVAILABILITY MAPS FOR BELIZE	127
55	FRESHWATER SUPPLY ROUTES & STATIONS WITHIN STAGE 1 DEVELOPMENT	130
56	DISTRIBUTED BATCHPLANT LAYOUT FOR THE STAGE 1 DEVELOPMENT	137
57	ELECTRIFICATION PLAN FOR THE STAGE 1 DEVELOPMENT	148
58	PATCH, EDGE & CORRIDORE RELATIONSHIPS IN DISTURBED ECOSYSTEMS	160
59	FRACTIONATION OF THE XAIBE PLAIN BROADLEAF FOREST LAND SYSTEM	163
60	THE FOUR FLAGS OF HURRICANE STATUS IN BELIZE	178
61	HURRICANE TRACKING CHART FOR THE BELIZE REGION	181
62	MONITORING SITES WITHIN THE STAGE 1 DEVELOPMENT	209

...End

LIST OF TEXT BOXES PRESENTED

NUMBER	TITLE	PAGE
1	SUMMARY OF KEY RECOMMENDATIONS	103
2	KEY LAND-BASED TRANSPORTATION IMPACTS AND MITIGATION MEASURES	108
3	KEY SEA-BASED TRANSPORTATION IMPACTS AND MITIGATION MEASURES	116
4	KEY MATERIAL CUT AND FILL IMPACTS AND MITIGATION MEASURES	123
5	KEY FRESHWATER SUPPLY IMPACTS AND MITIGATION MEASURES	133
6	KEY LIQUID WASTE DISCHARGE IMPACTS AND MITIGATION MEASURES	140
7	KEY SOLID WASTE TREATMENT IMPACTS AND MITIGATION MEASURES	145
8	KEY ENERGY SUPPLY/USE IMPACTS AND MITIGATION MEASURES	152
9	KEY WILDLIFE IMPACTS AND MITIGATION MEASURES	166
10	KEY ARCHAEOLOGICAL AND SOCIAL IMPACTS AND MITIGATION MEASURES	173

LIST OF ABBREVIATIONS

Ac	Acres (area)
AIA	Archaeological Impact Assessment
BEL	Belize Electricity Limited
BERT	Belize Emergency Response Team
BJE	Balam Jungle Estate
BP	Before Present
BRL	Barrier Reef Lagoon
BTU	British Thermal Units
COD	Chemical Oxygen Demand
CG	Confluent Growth
DOE	Department of the Environment
EIA	Environmental Impact Assessment
Ft, ft	Feet, Foot
Gal, gal	Gallon(s)
GPM	Gallons per Minute
Ha, ha	Hectares (area)
In, in	Inches
Kg, kg	Kilograms
Km, km	Kilometers
kW	Kilowatt
M	Millions, Meters
mg	Milligram
mm	Millimeters
M M ³	Million Cubic Meters
mph	Miles per Hour
MSW	Municipal Solid Waste
MT, mt	Metric Ton
mW	Megawatts
NEMO	National Emergency Management Organization (BZ)
NICH	National Institute of Culture and History
NOAA	National Oceanic and Atmospheric Administration (US)
ppm	parts per million
RDZ	Residential Tourism Zone
REA	Rapid Ecological Assessment
TDZ	Timber Development Zone
TNTC	Too Numerous To Count
TSS	Total Suspended Solids